



Department of Public Works
Engineering Division
 Robert F. Phillips, P.E., City Engineer

City-County Building, Room 115
 210 Martin Luther King, Jr. Boulevard
 Madison, Wisconsin 53703
 Phone: (608) 266-4751
 Fax: (608) 264-9275
engineering@cityofmadison.com
www.cityofmadison.com/engineering

Assistant City Engineer
 Michael R. Dailey, P.E.

Principal Engineer 2
 Gregory T. Fries, P.E.

Principal Engineer 1
 Christina M. Bachmann, P.E.
 Eric L. Dundee, P.E.
 John S. Fahrney, P.E.
 Christopher J. Petykowski, P.E.

Facilities & Sustainability
 Jeanne E. Hoffman, Manager

Operations Manager
 Kathleen M. Cryan

Mapping Section Manager
 Eric T. Pederson, P.S.

Financial Manager
 Steven B. Danner-Rivers

March 31, 2017

**NOTICE OF ADDENDUM
 ADDENDUM 2**

CONTRACT NO. 7928

Revise and amend the contract document(s) for the above project as stated in this addendum, otherwise, the original document shall remain in effect.

GENERAL CHANGES

1. Add item 25 “Rail attachment at SSCF” to the bid form
2. Add the following to the unit prices section in the spec.

Item	Type of Work	Unit Price
25	<u>Rail attachment at SSCF</u> on the East side of isle “H” of level 5. Work will include the fabrication of 2 new baseplates, welding rail to baseplates, and resetting tube railing to the adjacent tube railing. Work will also include concrete repair at spalled areas of parapet at attachment locations and anchoring baseplate to parapet wall. Refer to sheet D4 and Specification sections 02 41 17, 03 30 00, and 03 31 45. Payment is based on a lump sum for the work completed.	\$/EACH

3. Add sheet D4 “RAILING REPAIR DETAILS” to drawing set.

ATTACHMENTS

Sheet D4 – RAILING REPAIR DETAILS

Please acknowledge this addendum on page E1 of the contract documents and/or in Section E: Bidder’s Acknowledgement on Bid Express.

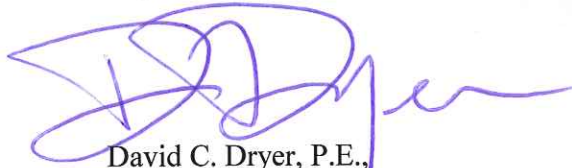
Electronic version of these documents can be found on the Bid Express web site at:

<http://www.bidexpress.com>

March 31, 2017

Page 2

If you are unable to download plan revisions associated with the addendum, please contact the Engineering office at 608-266-4751 receive the material by another route.



David C. Dryer, P.E.,
City Traffic Engineer and
Parking Utility Manager

- CIVIL ENGINEERING
- SURVEYING & MAPPING
- CONSTRUCTION SERVICES
- WATER RESOURCES
- PLANNING & DEVELOPMENT
- TRANSPORTATION ENGINEERING
- STRUCTURAL ENGINEERING
- LANDSCAPE ARCHITECTURE

MADISON REGIONAL OFFICE
 161 HORIZON DRIVE, SUITE 101
 VERONA, WISCONSIN 53593
 608.848.5060 PHONE | 608.848.2255 FAX

MADISON | MILWAUKEE
 KENOSHA | APPLETON | WAUSAU
www.jsdinc.com

SERVICES PROVIDED TO:

**CITY OF MADISON,
 PARKING
 UTILITY**



215 MARTIN LUTHER KING JR. BLVD
 MADISON, WISCONSIN 53701-2986

PROJECT:

**2017 PARKING
 GARAGE
 MAINTENANCE**

PROJECT LOCATION:

STATE STREET
 CAMPUS - FRANCES

JSD PROJECT NO.: 15-7159

SEAL/SIGNATURE:

ALTHOUGH EVERY EFFORT HAS BEEN MADE IN PREPARING THESE PLANS AND CHECKING THEM FOR ACCURACY, THE CONTRACTOR AND SUBCONTRACTORS MUST CHECK ALL DETAIL AND DIMENSIONS OF THEIR TRADE AND BE RESPONSIBLE FOR THE SAME.

DESIGN: PGB / JJE
 DRAWN: PGB
 APPROVED: JJE

PLAN MODIFICATIONS:	DATE:
ADDENDUM #2	03/31/2017



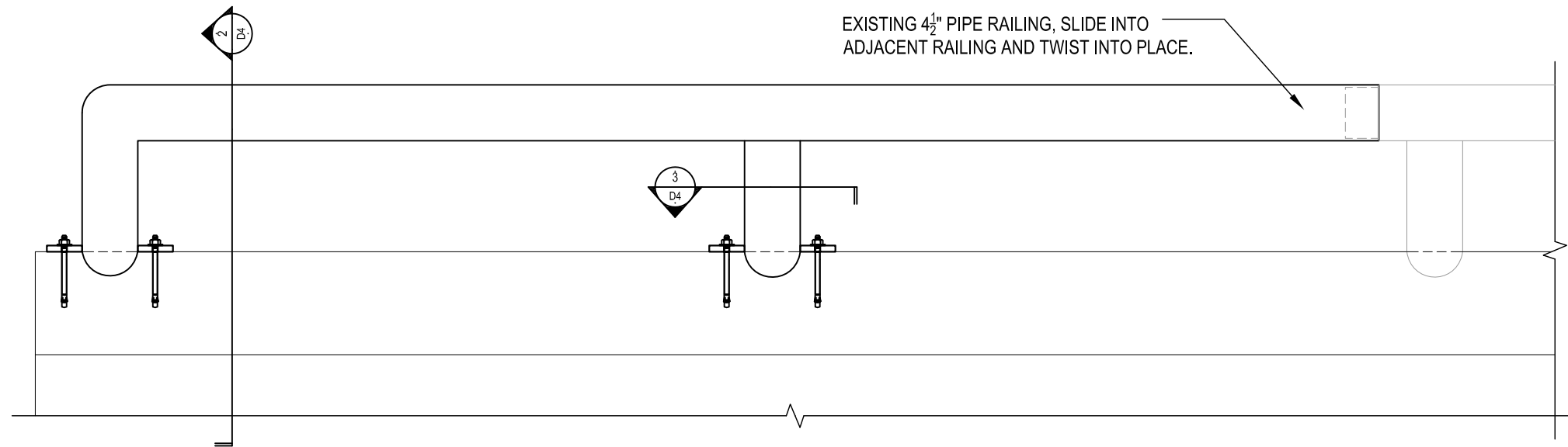
Toll Free (800) 242-8511
 Milwaukee Area (414) 258-1181
 Hearing Impaired TDD (800) 542-2289
www.DiggersHotline.com

SHEET TITLE:

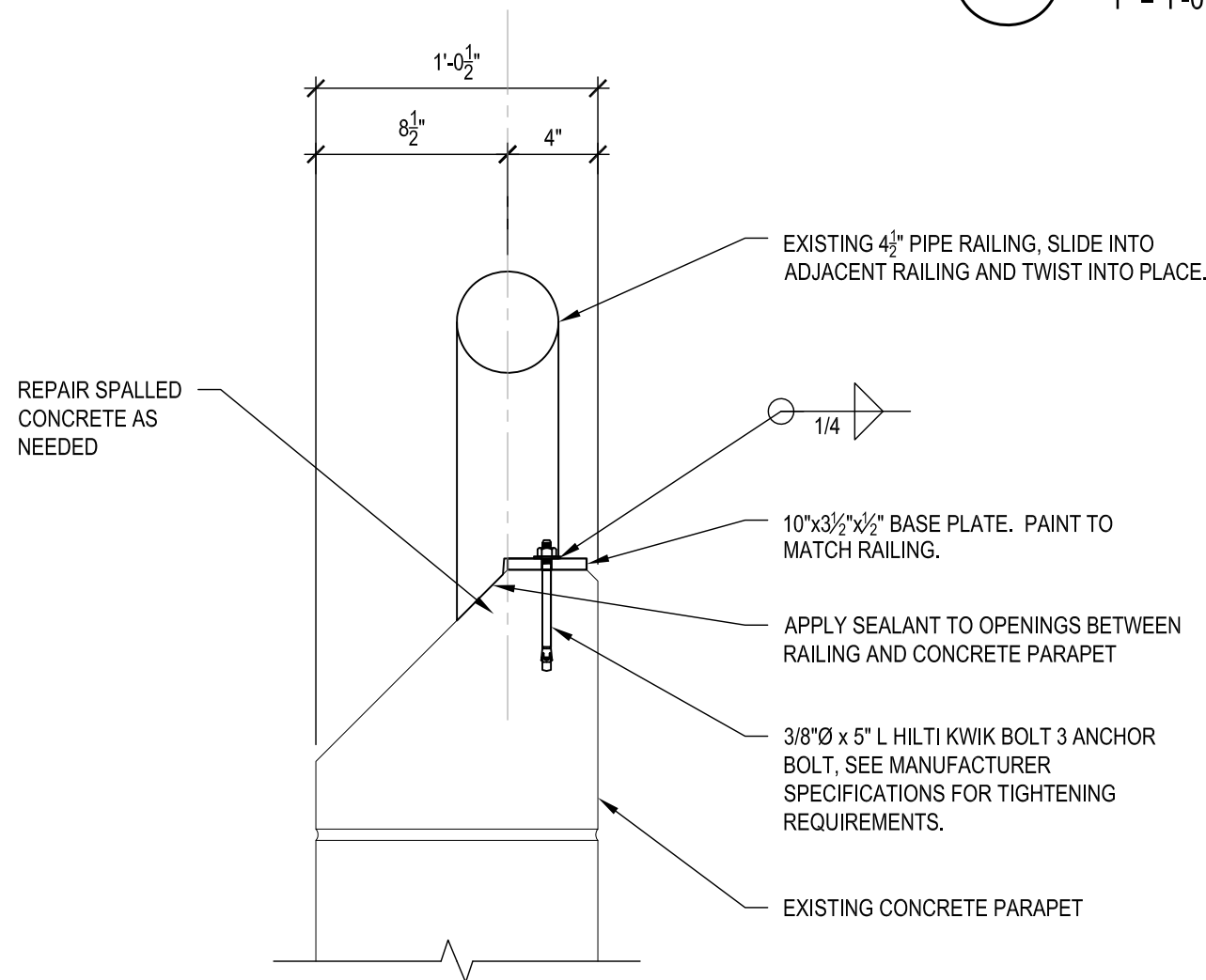
**RAILING REPAIR
 DETAILS**

SHEET NUMBER:

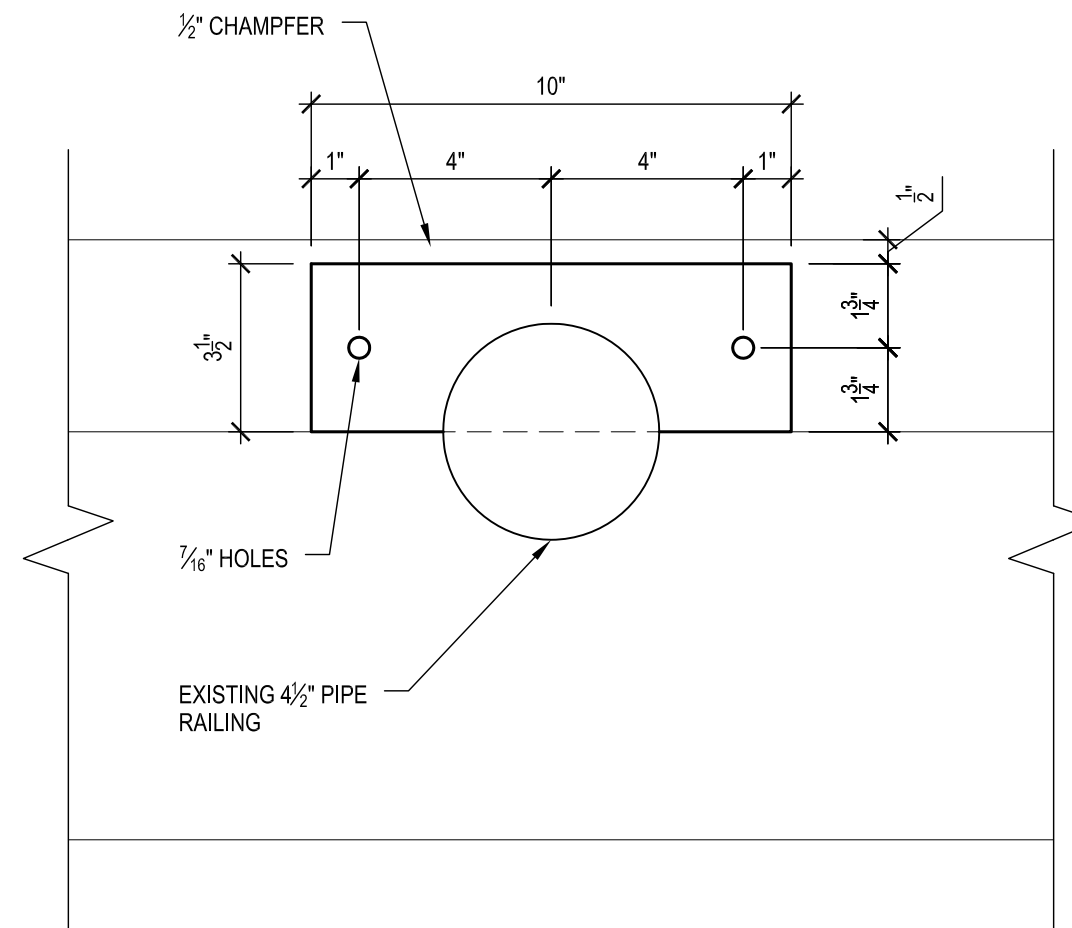
D4



1 RAILING ELEVATION
 1" = 1'-0"



2 PIPE RAIL CONNECTION SECTION
 1 1/2" = 1'-0"



3 BASE PLATE DETAIL
 3" = 1'-0"